

BALCONY/TERRACE WITH PEDESTAL DETAIL

WATERPROOFING TO BALCONY/TERRACE SPECIFICATION WITH PEDESTAL DETAIL - WATER BASE PU SYSTEM

1. Key Metrics:

- 1.1. Ensure concrete floors are level, smooth, and free of voids, protrusions, and cracks.
- 1.2. All falls must have a 1:100 degree slope/fall in the substrate.
- 1.3. Installation shall adhere to AS4654.2 2012 Waterproofing membrane systems for external use.
- 1.4. Cross-reference NCC 2022 Volume Two - Building Code of Australia Class 1 and 10 buildings.

2. Preparation:

- 2.1. All surfaces to be waterproofed must be firm, clean, dry, sound, and smooth.
- 2.2. Remove all grease, oil, wax, curing compounds, loose material, paint, and other contaminants.
- 2.3. Conduct moisture meter and substrate surface temperature measurements before commencing any waterproofing systems.

3. Drainage Outlets:

- 3.1. Retro fit all drainage outlets to comply with AS4654.2 2012 regulated puddle flanges.
- 3.2. Recess the Puddle Flanges (if not cast-in-situ) into the substrate without protruding above it.

4. Primer Application:

- 4.1. Apply 1 coat of ACTFLEX EP-250 PRIMER or ACTFLEX 600 PRIMER to all floor areas, including a minimum of 150mm upturns on balconies and terraces.
- 4.2. Allow 4-6 hours cure @ 25°C and 50% R.H. for ACTFLEX EP-250 PRIMER or 1-3 hours to dry @ 25°C and 50% R.H. for ACTFLEX 600 PRIMER.
- 4.3. Prime all pipe penetrations with ACTFLEX SUPER BOND 007 primer.

5. Joint Sealant:

- 5.1. Apply a 15mm x 15mm fillet of ACTFLEX MS PRO joint sealant on all floor/wall corner junctions and pipe penetrations.
- 5.2. Allow 20-60 minutes drying time to achieve a tack-free finish.

6. Floor Wastes:

- 6.1. After priming, install ACTNOW 100mm RUBBER PUDDLE FLANGES on all floor wastes using ACTFLEX 75FC joint sealant to secure the wall and lip of the flange to the floor and primed PVC pipe surface.
- 6.2. Ensure secure adhesion of all flange surfaces to the PVC pipe and concrete flooring by applying hand pressure.

7. Waterproofing Membrane:

- 7.1. Apply a minimum of two coats of ACTFLEX 101 UV membrane to the previously primed surfaces for entire floor area, including upturns, hobs, parapet walls, and drainage outlets. Ensure That Cross Hatch Rolling has been implemented between coats
- 7.2. Achieve a Dry Film Thickness (DFT) of 1.2mm or 1200 microns with a coverage of approximately 8-10m² finished dry film thickness.
- 7.3. Allow 6 hours drying time between coats and 72 hours after the final coat at 25°C and 50% R.H.

Drip Groove Detail:

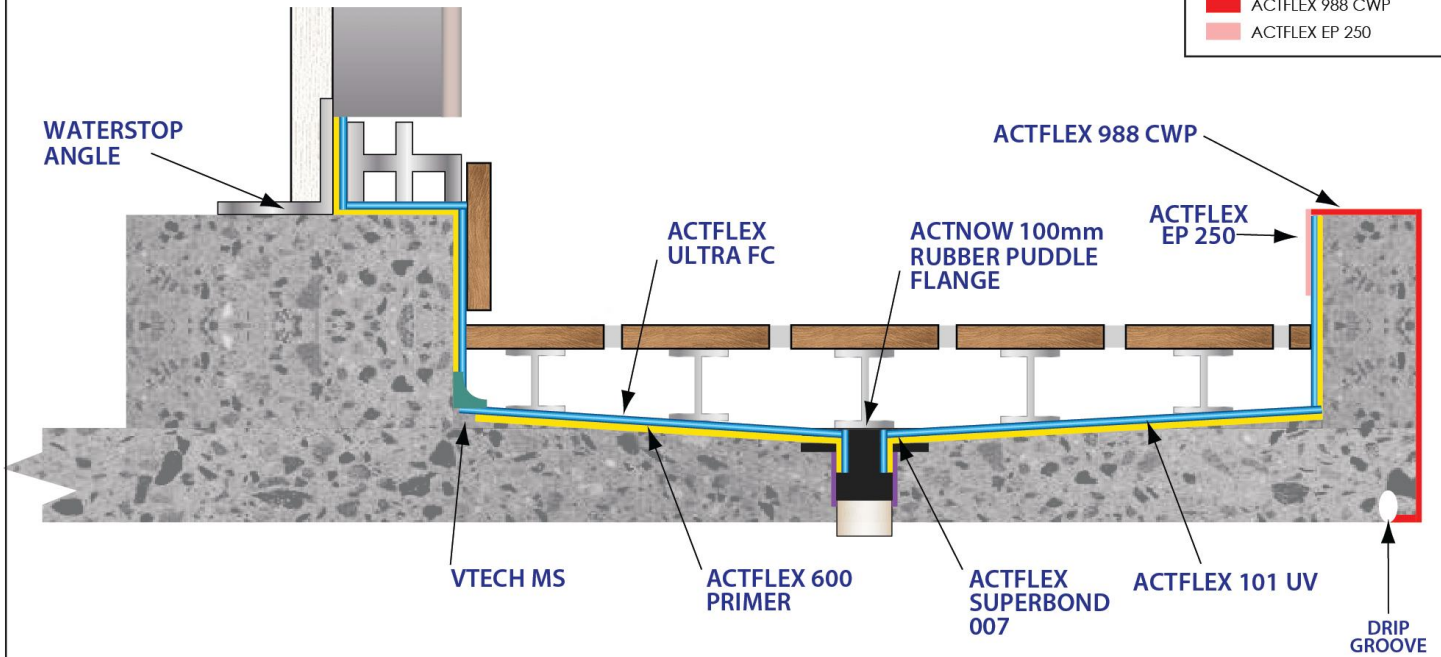
- Option 1:
- Apply ACTFLEX EP 250 on the internal face of the hob, extending over the top of the hob to the external face.
 - Once cured, apply 2 coats of ACTFLEX 988 CWP to the external face of the hob/soffit, extending to the drip grip. Allow 24 hours to dry after the final coat.
- Option 2:
- Apply ACTFLEX EP 250 on the internal face of the hob, extending over the top of the hob to the external face.
 - Then apply the approved Dulux Acratex facade weatherproof system to the external face of the hob/soffit, extending to the drip grip.

Always consult with a Actech Protective Coatings Representative for regulations specific to your wet areas, as they may have additional requirements for waterproofing projects.

BALCONY DETAIL

LEGEND

- ACTFLEX 101 UV
- ACTFLEX 600 PRIMER
- ACTFLEX SUPER BOND 007
- ACTFLEX 988 CWP
- ACTFLEX EP 250



The provided drawings and waterproofing details are intended to serve as general guidelines. It is the responsibility of the user to ensure the correct application of the products as per the specified instructions. These details are not exact to site-specific conditions and must be thoroughly reviewed and clarified prior to installation. It is imperative that all site conditions and any potential variations are considered, and that necessary adjustments are made to suit the specific requirements of the project. Any discrepancies or uncertainties should be addressed and resolved in consultation with our technical support team to ensure proper implementation.

DETAIL NAME

DRAWING NUMBER

SIGNED BY

DATE



CONDITIONS OF USE, PRODUCT DISCLAIMER AND STATEMENT OF RESPONSIBILITY

The information supplied is given in good faith and to the best of our knowledge is true and accurate at the time of printing. As the information herein is of a general nature, no assumption can be made as to a product's suitability for a particular use of application and no warranty as to accuracy, reliability or completeness either expressed or implied is given other than those required by Commonwealth or State Legislation. We reserve the right to update information without prior notice to you to reflect our ongoing research and development program. The customer or the contractor is responsible for checking the suitability of products for their intended use. It is the customers' responsibility to ensure that our products are used and handled correctly and in accordance with any applicable Australian Standards. Our instructions and recommendations are only for intended users only. Any advice, recommendation, information, assistance or service provided by Actech Protective Coatings in relation to its products or their use is given in good faith, however is provided without responsibility or liability. To the full extent permitted by law, Actech Protective Coatings Products liability is limited to its discretion, to replace or to refund the purchase price of the quantity of the products supplied. Actech Protective Coatings does not exclude rights and remedies that cannot be excluded by legislation, for example under the Consumer Guarantees Act 1993. Under no circumstances will the company be liable for loss, consequential or otherwise, arising from the use of the product.



ACTECH PROTECTIVE COATINGS

(02) 8021 3517 admin@actechpc.com.au Unit 22/872 Canterbury Road Roselands NSW 2196
www.thewaterproofingshop.com.au